

# KONE E MiniSpace™ DX visual options

This reliable and cost-effective elevator solution for residential buildings is durable, connected, easy to maintain, and available with clear specifications and carefully selected design options.

## Key specifications



API ready



Connected



Max. speed  
3.0 m/s



Max. load capacity  
1,350 kg



Max. travel  
160 m



Max. floors  
63



Max. persons  
18



Max. group size  
4



## Walls

### Brushed stainless steel



ST4  
Silver ST4AFP  
with anti-fingerprint  
coating  
🌀🌀



ST4LH  
Silver long hairline  
🌀🌀



ST2  
Gold  
ST2AFP with  
anti-fingerprint  
coating  
🌀



ST5  
Copper  
ST5AFP with  
anti-fingerprint  
coating  
🌀🌀



ST6  
Bronze  
ST6AFP with  
anti-fingerprint  
coating  
🌀🌀



ST7  
Carbon black  
🌀🌀



ST8  
Champagne Gold  
🌀



CB  
Carbon black  
short with  
Anti-fingerprint  
coating  
🌀🌀



ST43  
Silver  
🌀



ST43LH  
Silver long hairline  
🌀

### Painted steel



PP10FT  
Pure White,  
fine textured  
🌀🌀



PP18FT  
Linen Brown,  
fine textured  
🌀🌀



PP20FT  
Wool Gray,  
fine textured  
🌀🌀

### Metallic painted steel



METP1FT  
Champagne,  
fine textured  
🌀🌀



METP7FT  
Metallic Black,  
fine textured  
🌀🌀



MS1  
Metallic  
Champagne  
Printed Steel  
🌀🌀



MS2  
Metallic Coffee  
Printed Steel  
🌀🌀



MS3 - Metallic Grey  
Printed Steel  
🌀🌀

### Wooden printed steel



WS1  
Light wooden  
🌀🌀



WS2  
Warm wooden  
🌀🌀

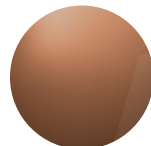


WS3  
Dark wooden  
🌀🌀

### Mirror-polished stainless steel



MP1  
Silver  
🌀

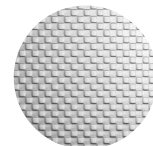


MP4  
Copper  
🌀

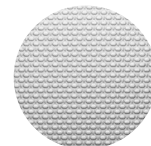


MP5  
Carbon Black  
🌀

### Textured stainless steel



K  
Scottish Quad  
🌀🌀



TS2  
Flemish Linen  
🌀

### Etched stainless steel



ST36S  
Silver Graphics



ST37S  
Silver Chain

#### Note:

🌀 Nordic Swan Ecolabel

🌀 LEED/BREEAM

\* Anti-stain, anti-fingerprint coating: This specialized coating helps keep colored stainless steel elevator materials looking as good as new by preventing staining and making fingerprints less visible.


## Floors

### Single-color pvc



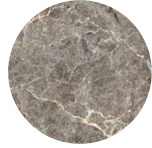
D6  
Light Brown




D25  
Rocky Gray  





D32  
Nordic White  

D33  
Sandstone Brown  


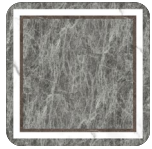


D34  
Laurent Black  


### Patterned pvc



DG07



DG15  
Himalayan Grey

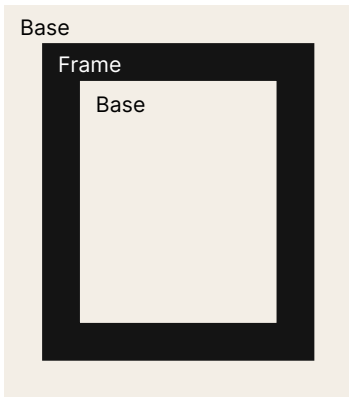


DG16  
Warm Sand




DG17  
Grey Sand

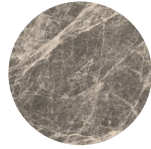
### PVC Floor customization




### Marble tile



MT1  
Elegant Black  






MT2  
Frosty Gray  




MT3  
White Marble  


Note:

-  Nordic Swan Ecolabel
-  LEED/BREEAM





## Doors

### Brushed stainless steel



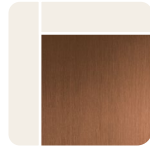
ST4  
Silver  
ST4AFP with  
anti-fingerprint  
coating  
Ⓢ Ⓡ



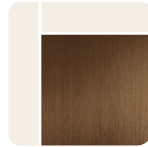
ST4LH  
Silver long hairline  
Ⓢ Ⓡ



ST2  
Gold  
ST2AFP with  
anti-fingerprint  
coating  
Ⓢ Ⓡ



ST5  
Copper  
ST5AFP with  
anti-fingerprint  
coating  
Ⓢ Ⓡ



ST6  
Bronze  
ST6AFP with  
anti-fingerprint  
coating  
Ⓢ Ⓡ



ST7  
Carbon black  
Ⓢ Ⓡ



ST8  
Champagne Gold  
Ⓢ Ⓡ



CB  
Carbon black  
short with  
Anti-fingerprint  
coating  
Ⓢ Ⓡ



ST43  
Silver  
Ⓢ Ⓡ



ST43LH  
Silver long hairline  
Ⓢ Ⓡ

### Painted steel



PP10FT  
Pure White,  
fine textured  
Ⓢ Ⓡ

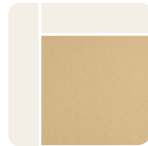


PP18FT  
Linen Brown,  
fine textured  
Ⓢ Ⓡ

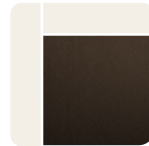


PP20FT  
Wool Gray,  
fine textured  
Ⓢ Ⓡ

### Metallic painted steel



METP1FT  
Champagne,  
fine textured  
Ⓢ Ⓡ



METP7FT  
Metallic Black,  
fine textured  
Ⓢ Ⓡ

### Etched stainless steel



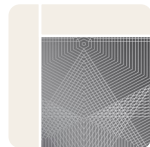
ST36S  
Silver Graphics



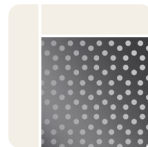
ST37S  
Silver Chain



ST40S  
Silver Polygon

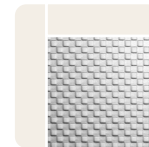


ST41S  
Silver Polygon



ST42S  
Silver Circle

### Textured stainless steel



K  
Scottish Quad  
Ⓢ Ⓡ

#### Note:

Ⓢ Nordic Swan Ecolabel

Ⓡ LEED/BREEAM

\* Anti-stain, anti-fingerprint coating: This specialized coating helps keep colored stainless steel elevator materials looking as good as new by preventing staining and making fingerprints less visible.

## Ceilings



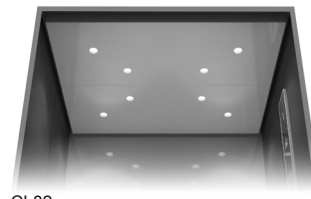
CL70  
Lighting: LED stripes  
Finishing: ST4



CL71  
Lighting: LED stripes  
Finishing: ST4, ST43



CL80  
Lighting: LED spot  
Finishing: ST4, ST43, PP10FT, MP1  
[🔗](#)



CL82  
Lighting: LED spot  
Finishing: ST4, ST43, PP10FT, MP1  
[🔗](#)



CL91  
Lighting: LED tubes  
Finishing: ST4, PP10FT, ST43



CL103  
Lighting: LED tubes  
Finishing: ST4, ST43



CL109  
Lighting: LED PCB  
Finishing: ST4, PP10FT  
[🔗](#) [🔗](#)



CL12  
Lighting: LED  
Finishing: ST43, PP10FT



LF15  
Lighting: LED PCB  
Finishing: MP1  
[🔗](#) [🔗](#)



LF18  
Lighting: LED Strip  
finishing: ST4, ST43, MP1, PP10FT



LF80S  
Lighting: LED spot  
Finishing: ST4, ST43, MP1, PP10FT



LF91S  
Lighting: LED strips  
Finishing: PP10FT ST4 ST43 MP1

## Handrails



HR24R  
Silver brushed stainless steel AISI304



HR61  
Brushed stainless steel, silver, gold, copper, bronze, carbon black, champagne gold, or P70 anti-bacteria finishing



HR31  
Round aluminum with black plastic end

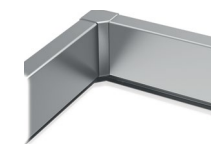


HR64  
Brushed stainless steel, silver, gold, copper, bronze, carbon black, champagne gold, or P70 anti-bacteria finishing

## Finishes

-  Silver (ST4) [🔗](#) [🔗](#)
-  Gold (ST2) [🔗](#)
-  Copper (ST5) [🔗](#) [🔗](#)
-  Bronze (ST6) [🔗](#) [🔗](#)
-  Carbon Black (ST7) [🔗](#) [🔗](#)
-  Carbon Black (P70) [🔗](#) [🔗](#)  
(anti-bacteria)
-  Champagne (ST8) [🔗](#)
-  Silver (ST43) [🔗](#)
-  Pure white (PP10FT) [🔗](#) [🔗](#)
-  Silver (MP1) [🔗](#)

## Skirtings



HR61  
Brushed stainless steel, silver, gold, copper, bronze, carbon black, champagne gold, or P70 anti-bacteria finishing

## KDS 220 - Carefully crafted reliability

### Car operating panel (COP)



Partial height COP

Full height COP

The KDS 220 signalization family provides excellent usability and reliability in a timeless design. Bright contrast LED or LCD displays and black and white operating buttons provide clear guidance for passengers inside the elevator car and on landings, while the sleek steel and tempered glass materials are stylish and durable.



Horizontal COP (SEC keypad)



Horizontal COP (TTC keypad)



Horizontal COP (KDS floor button)

### Faceplate finishes

- Silver (ST4AFP) with anti-fingerprint coating

### Mounting types

Surface mounted: landing, partial height & horizontal COP  
Flush mounted: full-height COP

### Display

7-segment, dot-matrix. STN LCD  
Amber LED, White LED

### Hall lanterns and indicators



HI

HL

### Buttons

Round surface mounted, Braille as an option, Square surface mounted with braille for EN81-70-2018, Relief marking round surface button for EN81-70-2021\_A1



Silver stainless steel with Braille



Black glass

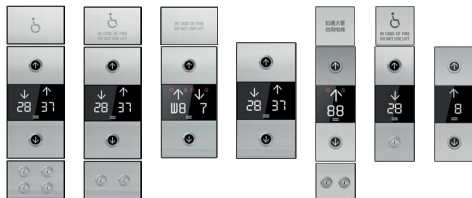


Silver stainless steel



Relief marking round surface

### Landing devices



Duplex LCI

Simplex LCI

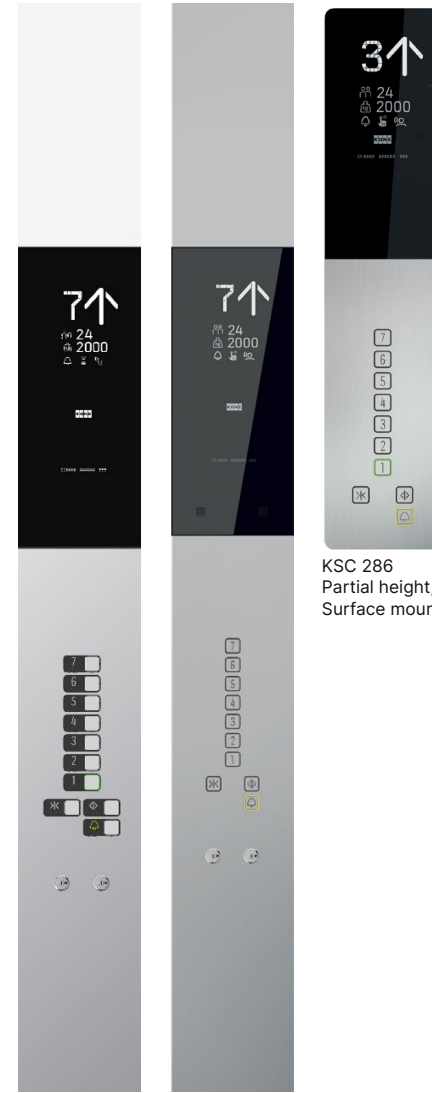
### Landing call station



LCS without indicator

## KSS 280 - Modern durability

### Car operating panel (COP)



KSC 286  
Partial height,  
Surface mounted

KSC 288  
Full height,  
Flush mounted

KSC 276  
Full height,  
Flush mounted

The KSS 280 signalization family is designed to provide simple, reliable guidance in low and medium-rise residential buildings. Available with a partial or full-height COP, it features a sleek, hardwearing stainless steel faceplate and clear segmented LCD displays for the COP and landing devices.



reddot design award  
winner 2012

### Faceplate finishes

- Asturias Satin (F)

### Displays

Segmented LCD  
LED display (KSH 280)

### Landing devices



KSI  
286

KSH  
280

KSJ  
280

KSL  
270



KSL  
280



KSL  
284



KSL  
286  
Simplex



KSL  
286  
Duplex



# Design online with KONE Studio

Explore different elevator options and configurations online before starting a new project. Make the right design choices, use the correct dimensions and get accurate planning specifications.



## Design with 3D visuals

Find the look you love with a simple, easy-to-use and free online design tool.



## Use exact building specifications

Optimize planning with accurate and always up-to-date product data.



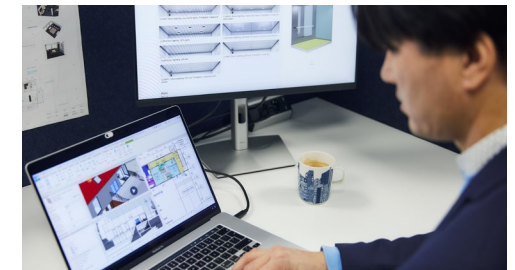
## Save project details

Test and finalize your custom designs, then make changes later if needed.



## Export CAD and BIM drawings

Identify potential issues and plan ahead to avoid surprises during construction.



Scan the QR code to try the KONE Studio

[www.kone.com/\[UPDATE URL & QR\]](http://www.kone.com/[UPDATE URL & QR])





KONE provides innovative and eco-efficient solutions for elevators, escalators, automatic building doors and the systems that integrate them with today's intelligent buildings. We support our customers every step of the way: from design, manufacturing and installation to maintenance and modernization. KONE is a global leader in managing the smooth flow of people and goods throughout buildings. This makes us a reliable partner throughout the life cycle of buildings. We are fast, flexible, and we have a well-deserved reputation as a technology leader, with such innovations as KONE 24/7 Connected Services and KONE UltraRope®. KONE employs over 63,000 dedicated experts to serve you globally and locally.

## KONE Corporation

### Corporate offices

Keilasatama 3  
P.O. Box 7  
Espoo, 02150  
Finland

Tel.: +358 (0)204 75 1  
Fax: +358 (0)204 75 4496

Business Identity Code: 1927400-1

This publication is for general informational purposes only and we reserve the right at any time to alter the product design and specifications. No statement in this publication shall be construed as a warranty or condition, express or implied, as to any product, its fitness for any particular purpose, merchantability, quality or representation of the terms of any purchase agreement. Minor differences between printed and actual colors may exist. KONE MonoSpace® DX, KONE EcoDisc® and People Flow® are registered trademarks of KONE Corporation. Copyright © 2024 KONE Corporation.

[www.kone.com](http://www.kone.com)

**Dedicated to  
People Flow™**