



# Materials and accessories

KONE N MiniSpace™ DX, KONE MiniSpace™ DX,  
KONE N MonoSpace® DX, KONE S MonoSpace® DX

[www.kone.com](http://www.kone.com)

Dedicated to  
People Flow™



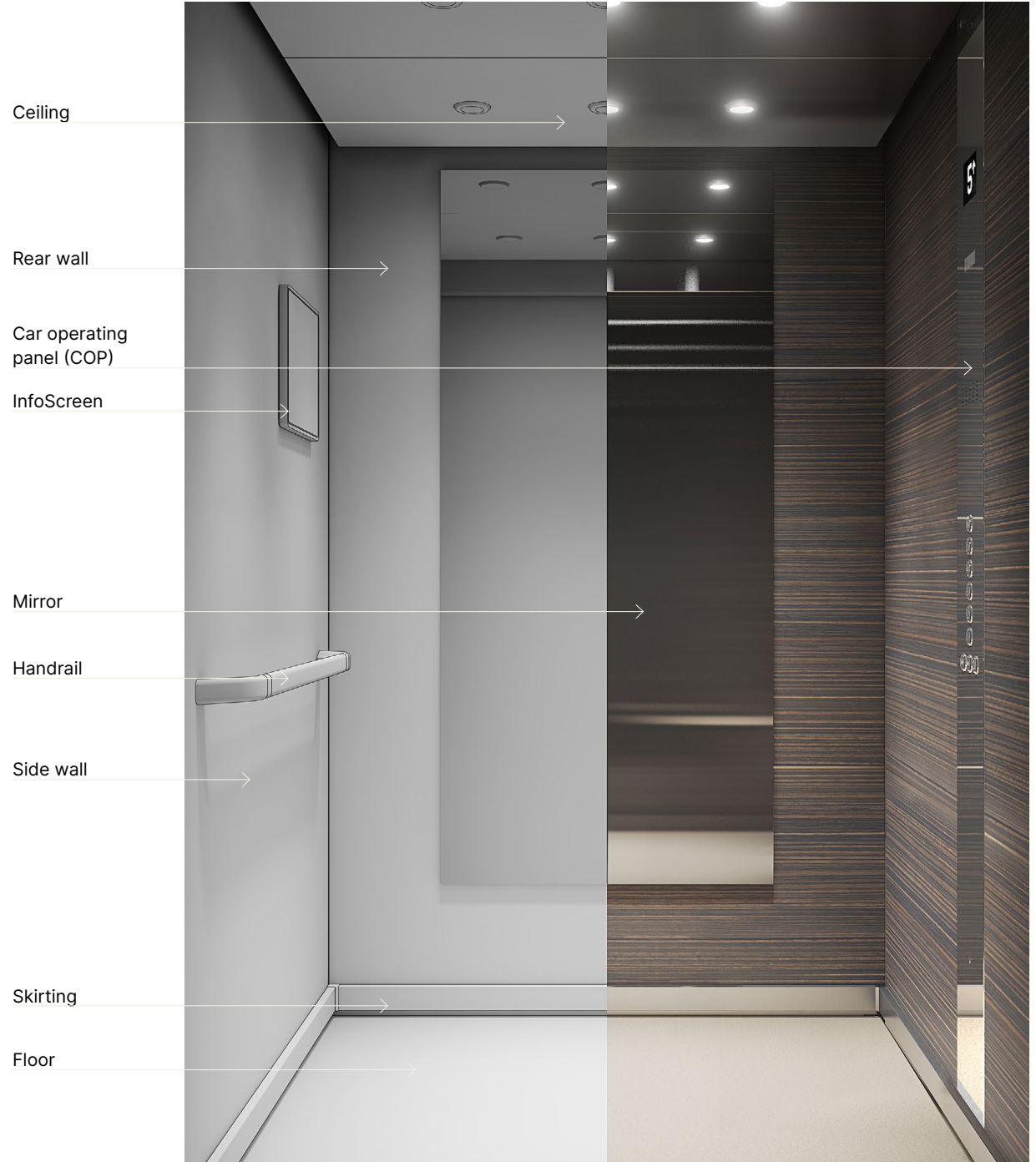
# Materials and accessories for elevator car interiors

This catalog presents our full selection of elevator car interior materials and accessories.

All the options included in our offering are designed to be both visually appealing and functional.

The materials and accessories presented in this catalog are available for KONE MonoSpace® 700 DX Marine and KONE MiniSpace™ DX Marine.

Introduction .....	2
Walls .....	3
Floors .....	4
Doors .....	5
Ceilings .....	6
Handrails .....	7
Skirting .....	7
Buffer rails .....	7
Mirrors .....	7
Tenant directories .....	7
MediaScreens .....	7
Scenic elevators .....	8
Scenic elevator wall materials .....	9
Scenic elevator floor materials .....	10
Scenic elevator ceilings .....	11
KONE Studio .....	12



## Walls

### Brushed stainless steel



ST4  
Silver ST4AFP  
with anti-fingerprint  
coating  
🔗🌿



ST4LH  
Silver long hairline  
🔗🌿



ST2  
Gold  
ST2AFP with  
anti-fingerprint  
coating  
🌿



ST5  
Copper  
ST5AFP with  
anti-fingerprint  
coating  
🔗🌿



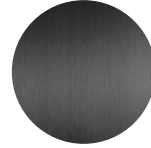
ST6  
Bronze  
ST6AFP with  
anti-fingerprint  
coating  
🔗🌿



ST7  
Carbon black  
🔗🌿



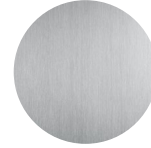
ST8  
Champagne Gold  
🌿



CB  
Carbon black  
short with  
Anti-fingerprint  
coating  
🔗🌿



ST43  
Silver  
🌿



ST43LH  
Silver long hairline  
🌿

### Painted steel



PP10FT  
Pure White,  
fine textured  
🔗🌿



PP18FT  
Linen Brown,  
fine textured  
🔗🌿



PP20FT  
Wool Gray,  
fine textured  
🔗🌿

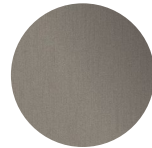
### Metallic painted steel



METP1FT  
Champagne,  
fine textured  
🔗🌿



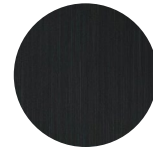
METP7FT  
Metallic Black,  
fine textured  
🔗🌿



MS1  
Metallic  
Champagne  
Printed Steel  
🔗🌿

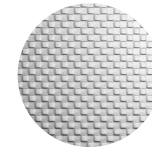


MS2  
Metallic Coffee  
Printed Steel  
🔗🌿

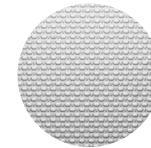


MS3 - Metallic Grey  
Printed Steel  
🔗🌿

### Textured stainless steel



K  
Scottish Quad  
🌿



TS2  
Flemish Linen  
🔗🌿

### Wooden printed steel



WS1  
Light wooden  
🔗🌿



WS2  
Warm wooden  
🔗🌿

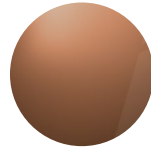


WS3  
Dark wooden  
🔗🌿

### Mirror-polished stainless steel



MP1  
Silver  
🌿

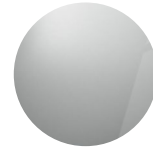


MP4  
Copper  
🌿

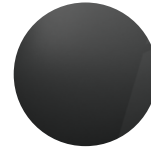


MP5  
Carbon Black  
🌿

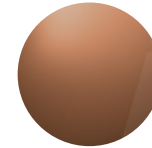
### Satin stainless steel



MP6AFP  
Silver with  
anti-fingerprint  
coating  
🔗🌿



MP8AFP  
Carbon black with  
anti-fingerprint  
coating  
🔗🌿



MP9AFP  
Copper with  
anti-fingerprint  
coating  
🔗🌿

### Etched stainless steel



ST28S  
Silver Pop



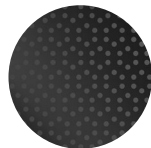
ST31S  
Silver High-rise



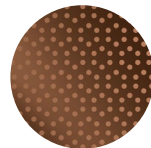
ST37S  
Silver Chain



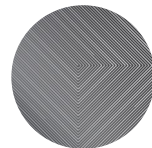
ST40S  
Silver Polygon



ST42B \*  
Carbon Black Circle

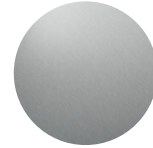


ST42C \*  
Copper Circle

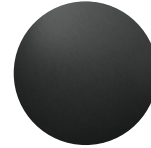


ST44S  
Silver Wood  
🔗🌿

### Indirect stainless steel



ST21S  
Silver  
🌿



ST21B  
Carbon black  
🔗🌿

### Transparent glass



TW1\*\*  
Glass  
🔗🌿

Note:

🔗 Nordic Swan Ecolabel

🌿 LEED/BREEAM

\* Anti-stain, anti-fingerprint coating: This specialized coating helps keep colored stainless steel elevator materials looking as good as new by preventing staining and making fingerprints less visible.

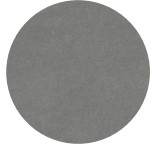
\*\* TW1 only available for the rear wall

## Floors

### Single-color pvc



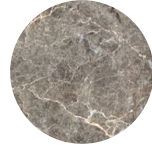
D6  
Light Brown



D25  
Rocky Gray



D32  
Nordic White



D33  
Sandstone Brown



D34  
Laurent Black

### Patterned pvc



DG07



DG15  
Himalayan Grey



DG16 Warm Sand



DG17 Grey Sand

### Composite stone



M4R / M4H  
Nature White



M5R  
Pebble Gray



M7R  
Light Sand



M12R  
Volakas white

### Real granite



M3R / M3H  
Black Golden Sand  
stone

### Rubber



RC7  
Coin pattern

### Marble tile



MT1  
Elegant Black

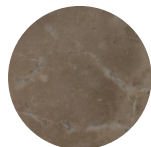


MT2  
Frosty Gray



MT3  
White Marble

### Real marble

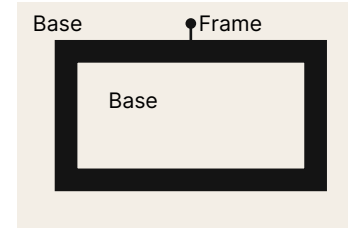


N1R  
Castle Gray stone

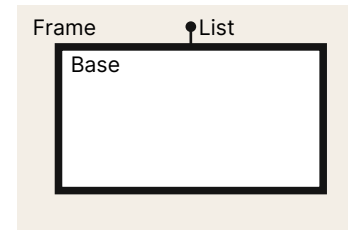


N2R  
Dark Emperor  
stone

### PVC floor customization (free pattern)



### Stone floor customization (free pattern)



## Design online with KONE Studio

Explore different elevator options and configurations online before starting a new project. Make the right design choices, use the correct dimensions and get accurate planning specifications.



### Design with 3D visuals

Find the look you love with a simple, easy-to-use and free online design tool.



### Use exact building specifications

Optimize planning with accurate and always up-to-date product data.



### Save project details

Test and finalize your custom designs, then make changes later if needed.



### Export CAD and BIM drawings

Identify potential issues and plan ahead to avoid surprises during construction.

Scan the QR code to try the KONE Studio

[www.kone.com/\[UPDATE URL & QR\]](http://www.kone.com/[UPDATE URL & QR])



Note:

- Nordic Swan Ecolabel
- LEED/BREEAM



Note:

🇸🇪 Nordic Swan Ecolabel

🌿 LEED/BREEAM

\* Not available for KONE N MiniSpace™

## Doors

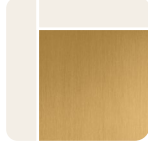
### Brushed stainless steel



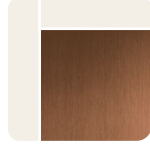
ST4  
Silver  
ST4AFP with  
anti-fingerprint  
coating  
🇸🇪 🌿



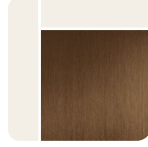
ST4LH  
Silver long hairline  
🇸🇪 🌿



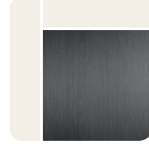
ST2  
Gold  
ST2AFP with  
anti-fingerprint  
coating  
🌿



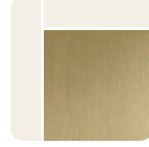
ST5  
Copper  
ST5AFP with  
anti-fingerprint  
coating  
🇸🇪 🌿



ST6  
Bronze  
ST6AFP with  
anti-fingerprint  
coating  
🇸🇪 🌿



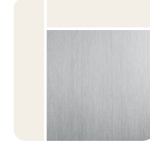
ST7  
Carbon black  
🇸🇪 🌿



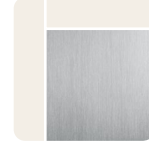
ST8  
Champagne Gold  
🌿



CB  
Carbon black  
short with  
Anti-fingerprint  
coating  
🇸🇪 🌿



ST43  
Silver  
🌿



ST43LH  
Silver long hairline  
🌿

### Painted steel



PP10FT  
Pure White,  
fine textured  
🇸🇪 🌿

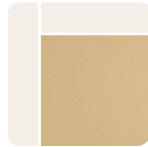


PP18FT  
Linen Brown,  
fine textured  
🇸🇪 🌿

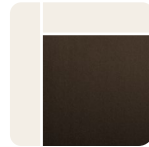


PP20FT  
Wool Gray,  
fine textured  
🇸🇪 🌿

### Metallic painted steel

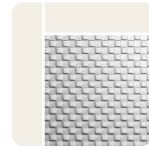


METP1FT  
Champagne,  
fine textured  
🇸🇪 🌿

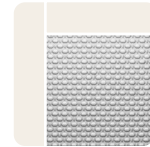


METP7FT  
Metallic Black,  
fine textured  
🇸🇪 🌿

### Textured stainless steel

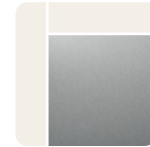


K  
Scottish Quad  
🇸🇪 🌿



TS2  
Flemish Linen  
🌿

### Indirect stainless steel



ST21S  
Silver  
🌿



ST21B  
Carbon black  
🇸🇪 🌿

### Mirror-polished stainless steel



MP1  
Silver  
🌿



MP4  
Copper  
🌿



MP5  
Carbon Black  
🌿

### Satin stainless steel



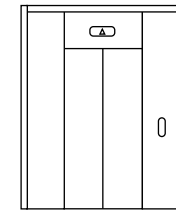
MP6AFP  
Silver with  
anti-fingerprint  
coating  
🇸🇪 🌿



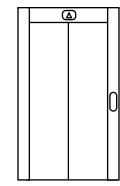
MP8AFP  
Carbon black with  
anti-fingerprint  
coating  
🇸🇪 🌿



MP9AFP  
Copper with  
anti-fingerprint  
coating  
🇸🇪 🌿



Front



Frame



Narrow frame

### Etched stainless steel



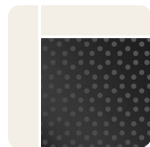
ST28S  
Silver Pop



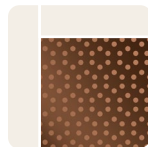
ST37S  
Silver Chain



ST40S  
Silver Polygon



ST42B \*  
Carbon Black Circle



ST42C \*  
Copper Circle



ST44S  
Silver Wood  
🇸🇪 🌿

### Transparent glass



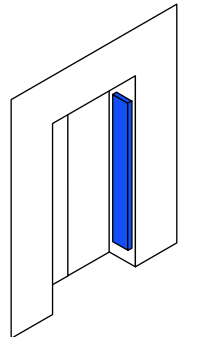
TW1  
Glass  
🇸🇪 🌿

### Door map

#### Brushed stainless steel



ST4  
Silver, AISI304  
🇸🇪 🌿





## Ceilings



CL70  
Lighting: LED stripes  
Finishing: ST4



CL71  
Lighting: LED stripes  
Finishing: ST4, ST43



CL72  
Lighting: LED tubes  
Finishing: ST4, PP10FT



CL80, CL80FFL  
Lighting: LED spot  
Finishing: ST4, ST43, PP10FT, MP1



CL80V  
Lighting: LED spot  
Finishing: ST4  
EN81-71 compliant



CL82  
Lighting: LED spot  
Finishing: ST4, ST43, PP10FT, MP1



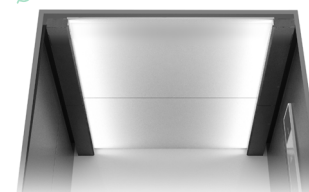
CL91  
Lighting: LED tubes  
Finishing: ST4, PP10FT, ST43



CL96V, CL96FFL  
Lighting: LED PCB  
Finishing: ST4, PP10FT  
EN81-71 compliant



CL103  
Lighting: LED tubes  
Finishing: ST4, ST43



CL109  
Lighting: LED PCB  
Finishing: ST4, PP10FT



CL151  
Lighting: LED panel  
Finishing: ST4, MP2



CL162  
Direct lighting: LED spot lighting  
Indirect lighting: LED tubes  
Finishing: MP1



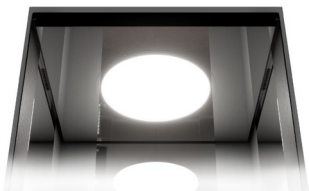
CL181  
Lighting: LED stripe, wall washer lighting  
Finishing: MP1, MP2



CL196  
Direct lighting: LED spot  
Indirect lighting: LED strip  
Finishing: ST4, PP10FT, MP1



CL12  
Lighting: LED  
Finishing: ST43, PP10FT



LF15  
Lighting: LED PCB  
Finishing: MP1



LF18  
Lighting: LED Strip  
finishing: ST4, ST43, MP1, PP10FT








LF80S  
Lighting: LED spot  
Finishing: ST4, ST43, MP1, PP10FT



LF91S  
Lighting: LED strips  
Finishing: PP10FT ST4 ST43 MP1

## Finishes

-  Silver (ST4)
-  Silver (ST43)
-  Pure white (PP10FT)
-  Silver (MP1)
-  Golden (MP2)

## Energy-saving car lighting

KONE elevators are equipped with modern fluorescent tubes and LED lights that can last up to 10 times longer and use up to 80% less energy than conventional lighting solutions.

## Handrails



HR24R  
Silver brushed stainless steel  
AISI304



HR31  
Round aluminum with black  
plastic end



HR61  
Brushed stainless steel,  
silver, gold, copper, bronze,  
carbon black, champagne  
gold, or P70 anti-bacteria  
finishing

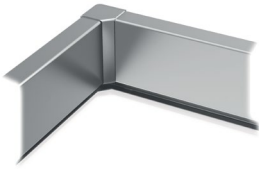


HR64  
Brushed stainless steel,  
silver, gold, copper, bronze,  
carbon black, champagne  
gold, or P70 anti-bacteria  
finishing



HR81/HR81TR  
Silver or gold brushed stainless  
steel AISI304

## Skirtings











SK1  
Silver, gold, copper, bronze,  
champagne gold, or carbon  
black brushed stainless steel

## Buffer rails



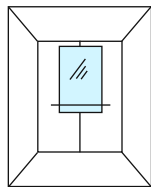
BR1  
Natural anodized frame  
ST4 and Light Wood

### Finishes

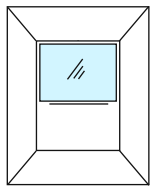
-  Silver (ST4)
-  Gold (ST2)
-  Copper (ST5)
-  Bronze (ST6)
-  Carbon Black (ST7)
-  Champagne (ST8)
-  Carbon Black (P70)  
(anti-bacteria)
-  Carbon Black (CB)

## Mirrors

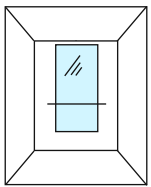
### Standard mirror



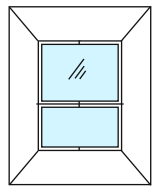
MR1  
Partial width  
Partial height



MR1  
Full width  
Partial height



MR1  
Partial width  
Mid height



MR1  
Full width  
Full height

### Wide angle mirror



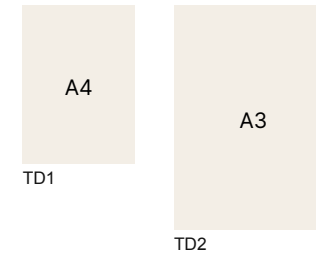
Wide Angle Mirror compliant with  
EN81-70 & GOST 33562

## KONE Tenant directory

The tenant directory is completely customizable and can be easily updated according to your needs.

Directories can be installed either vertically or horizontally.

Sizes:



Materials:  
Brushed stainless steel base  
Tempered glass door  
Brushed or polished aluminum

## KONE MediaScreens

KONE MediaScreens are installed inside the elevator and take the pain out of communicating with tenants and other users of buildings. There are offline and online versions. Consult your sales representative for more information.

### KONE MediaScreen 300

The content is updated online and remotely. The screen can be installed on the elevator wall and comes with the online KONE Information 300 service, a powerful and easy-to-use solution for sharing and scheduling content.



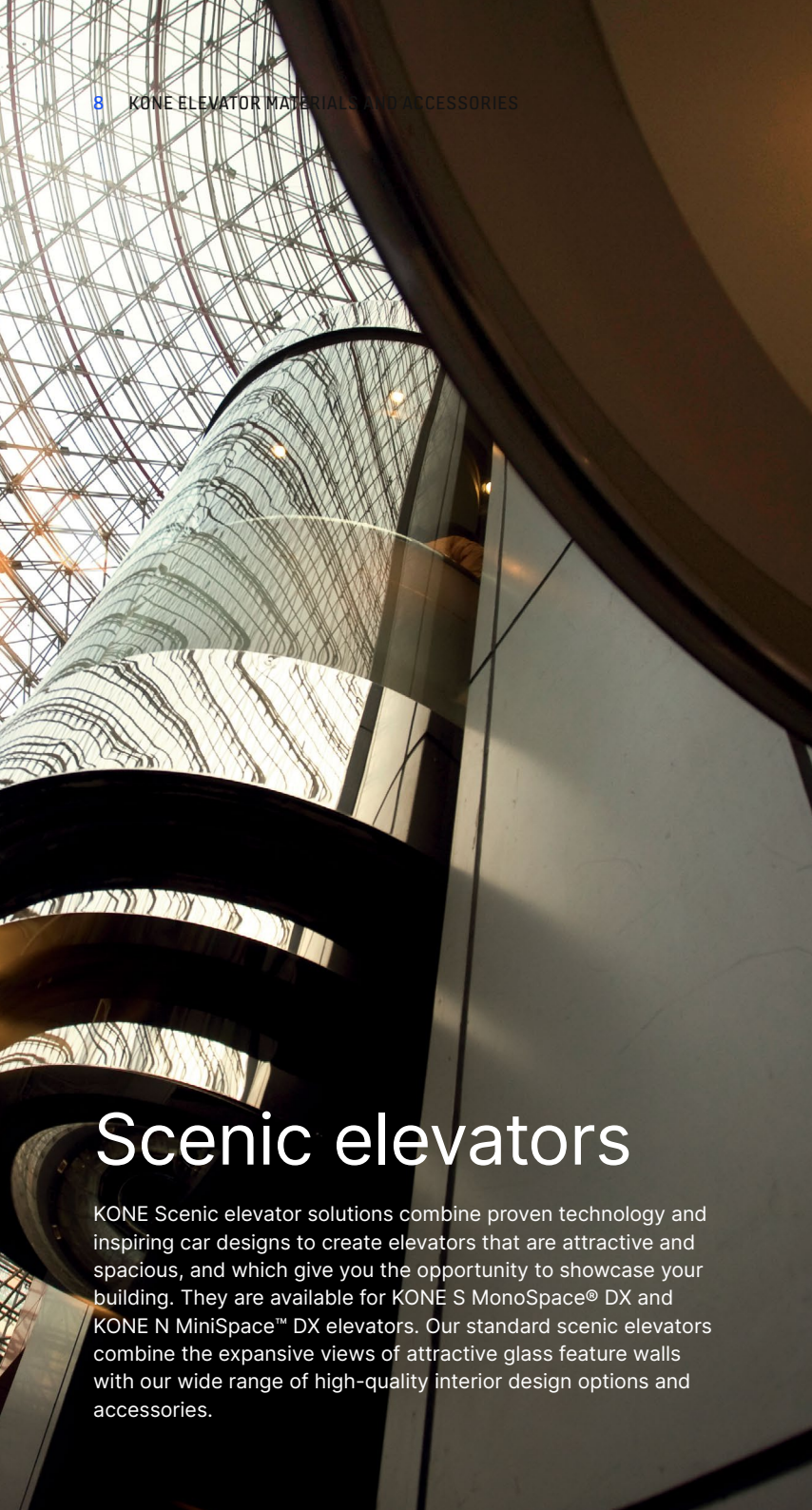
Surface mounted 10.4"  
Surface mounted 15"



Flush mounted 10.4"  
Flush mounted 15"



15" LCD display  
Surface mounted



### Scenic elevator car options



HSGQ004



HSGQ005



HSGQ008



HSGQ009



HSGQ020



HSGQ015



HSGQ025



SCE5-3 (11)



SCE5-3 (12)



SCE5-3 (13)



SCE5-3 (21)



SCE5-3 (22)



SCE5-3 (23)

### Scenic elevator handrail options



HSGF-Y01



HSGF-Y02



HSGF-Y03



HSGF-Y04



HSGF-Y05



HSGF-L01



HSGF-L02



HSGF-F1



HSGF-F2



HSGF-F3

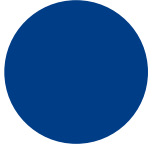
# Scenic elevators

KONE Scenic elevator solutions combine proven technology and inspiring car designs to create elevators that are attractive and spacious, and which give you the opportunity to showcase your building. They are available for KONE S MonoSpace® DX and KONE N MiniSpace™ DX elevators. Our standard scenic elevators combine the expansive views of attractive glass feature walls with our wide range of high-quality interior design options and accessories.



## Walls

### Painted steel



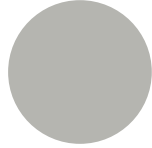
HSSK-01



HSSK-02



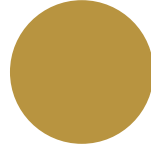
HSSK-03



HSSK-04



HSSK-05



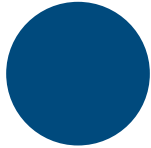
HSSK-06



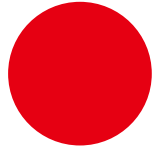
HSSK-07



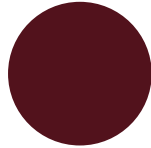
HSSK-08



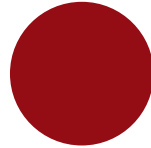
HSSK-09



HSSK-10



HSSK-11



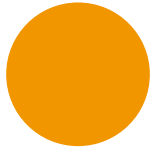
HSSK-12



HSSK-13



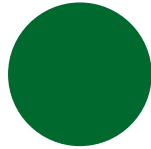
HSSK-14



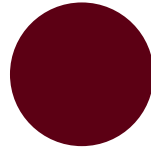
HSSK-15



HSSK-16



HSSK-17



HSSK-18

### Brushed stainless steel

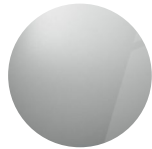


ST4  
Silver

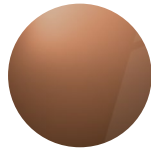


ST2  
Gold

### Mirror-polished stainless steel



MP1  
Silver



MP4  
Copper



MP5  
Carbon black

### Painted steel



TS2  
Flemish Linen

### Painted steel



PP10FT  
Pure White,  
fine textured



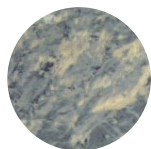
PP20FT  
Wool Gray,  
fine textured





## Floors

### PVC



1522



1434



0086-2



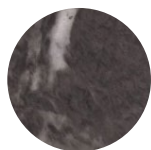
318



320



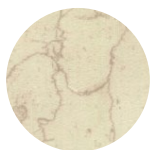
319



172



0186



0110-2



305



315



310



7222



0190-7



1414



316



3104



2107



D6  
Light Brown PVC



D25  
Rocky Gray PVC



D26  
Lava Stone PVC



DG01



DG02



DG05

### Marble



HSDPY-101



HSDPY-102



HSDPY-103



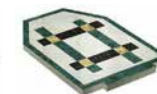
HSDPY-104



HSDPY-105



HSDPL-201



HSDPL-202



HSDPL-203



HSDPL-204



HSDPL-205



HSDPF-01



HSDPF-02



HSDPF-03



HSDPF-09



HSDPF-10

### Stone



M3R  
Black Golden Sand  
stone, granite



M4R  
Nature White,  
composite stone



M5R  
Pebble Gray, com-  
posite stone

### Rubber



RC7  
Coin pattern



## Ceilings



HSET-J010



HSET-J012



HSET-J013



HSET-J031



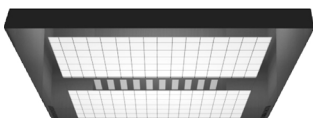
HSET-J034



HSET-J037



HSET-N04



HSET-N05



HSET-N06



HSET-N10



CL70



CL88



CL91



HSDDY-101



HSDDY-102



HSDDY-103



HSDDY-104



HSDDY-105



HSDDL-201



HSDDL-202



HSDDL-203



HSDDL-204



HSDDL-205



HSDDF-301



HSDDF-302



HSDDF-303



HSDDF-304



HSDDF-305



KONE provides innovative and eco-efficient solutions for elevators, escalators, automatic building doors and the systems that integrate them with today's intelligent buildings. We support our customers every step of the way: from design, manufacturing and installation to maintenance and modernization. KONE is a global leader in managing the smooth flow of people and goods throughout buildings. This makes us a reliable partner throughout the life cycle of buildings. We are fast, flexible, and we have a well-deserved reputation as a technology leader, with such innovations as KONE 24/7 Connected Services and KONE UltraRope®. KONE employs over 63,000 dedicated experts to serve you globally and locally.

## KONE Corporation

### Corporate offices

Keilasatama 3  
P.O. Box 7  
Espoo, 02150  
Finland

Tel.: +358 (0)204 75 1  
Fax: +358 (0)204 75 4496

Business Identity Code: 1927400-1

This publication is for general informational purposes only and we reserve the right at any time to alter the product design and specifications. No statement in this publication shall be construed as a warranty or condition, express or implied, as to any product, its fitness for any particular purpose, merchantability, quality or representation of the terms of any purchase agreement. Minor differences between printed and actual colors may exist. KONE MonoSpace® DX, KONE EcoDisc® and People Flow® are registered trademarks of KONE Corporation. Copyright © 2024 KONE Corporation.

[www.kone.com](http://www.kone.com)

**Dedicated to  
People Flow™**